



香港中文大學
The Chinese University of Hong Kong



Postgraduate Studies at CUHK

2024-2025 Admissions



香港中文大學 | 研究院
CUHK | Graduate
School

CUHK Rankings

47th

in the World

QS World University
Rankings 2024

6th

in Asia

Times Higher Education (THE)
Asia University Rankings 2023

1st

in Hong Kong

US News & World Report
Best Global Universities in Asia 2022-2023



香港中文大學
CUHK

研究院
Graduate
School

Faculties at CUHK

1. Faculty of Arts
2. Faculty of Business Administration
3. Faculty of Education
4. Faculty of Engineering
5. Faculty of Law
6. Faculty of Medicine
7. Faculty of Science
8. Faculty of Social Science
9. Inter-Faculty (*for interdisciplinary programmes*)

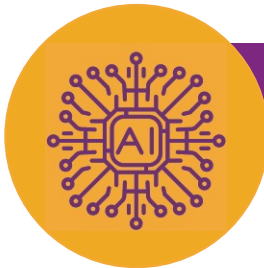


4 Strategic Areas of Research

- CUHK is a comprehensive research university recognised for its excellence in multiple aspects both regionally and globally.
- We currently have four research foci, which are of critical importance to the flourishing of humanity in the 21st century:



China: Tradition and
Modernity



Information and
Automation Technology



Innovative
Biomedicine



Environment and
Sustainability



香港中文大學
CUHK

研究院
**Graduate
School**

Research Achievements

- With the support of a wide array of over 300 research institutes and research centres, CUHK has long promoted interdisciplinary research excellence on local, national and international levels.

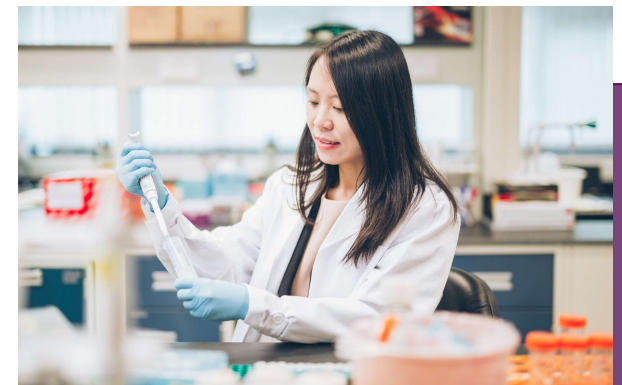


Research Achievements

The University Grants Committee has provided preferential funding to local tertiary institutions to conduct research in selected Areas of Excellence (AoE). **Out of a total of 32 such projects, 11 are led by CUHK researchers.**

Some of the on-going AoE projects:

- Aging, Skeletal Degeneration and Regeneration
- Probing the Fundamental Structure of Matter with High Energy Particle Collisions
- Centre for Genomic Studies on Plant-Environment Interaction for Sustainable Agriculture and Food Security
- Centre for Medical Engineering of Molecular and Biological Probes
- Centre for Organelle Biogenesis and Function



香港中文大學
CUHK

研究院
**Graduate
School**

Distinguished Research Scholars

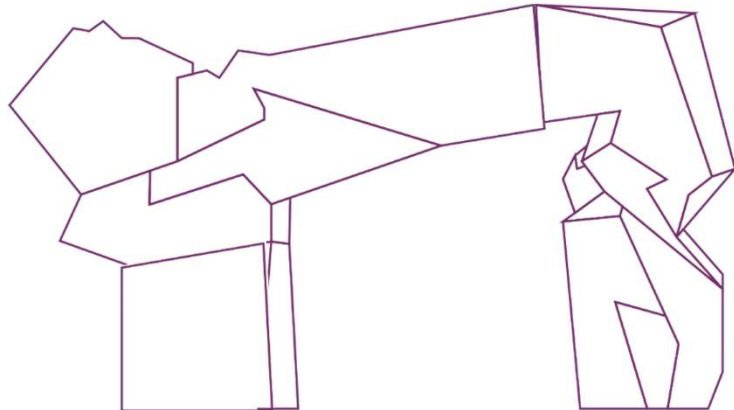
Honour / Award / Fellowship	Quantity
Nobel Laureate	1
Fields Medalist	1
Wolf Prize Laureate in Mathematics	1
Winner of Turing Award	1
Nature Biotechnology – Top 20 Translational Researchers	3
Clarivate Analytics - Highly Cited Researchers 2022	11
IEEE Fellows	41
Academicians of the Chinese Academy of Sciences	7
Foreign Academicians of the Chinese Academy of Sciences	2
Academicians of the Chinese Academy of Engineering	2
Research.com's 2022 Best Female Scientists	3



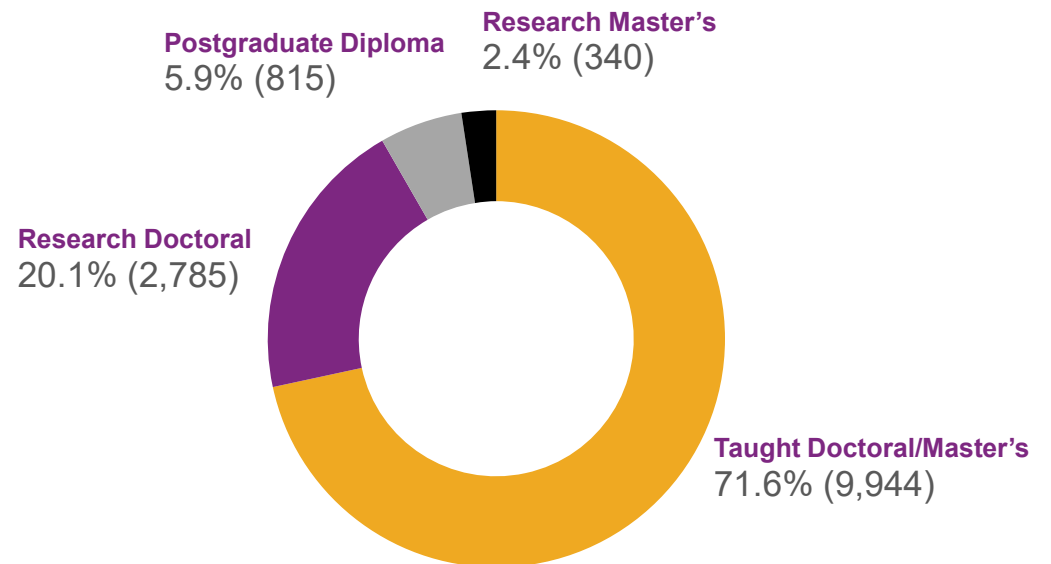
Student Enrollment

Undergraduates	16,699
Postgraduates	13,884
University Total	30,583

* Figures as of 31 March 2023



Postgraduate Student Enrollment

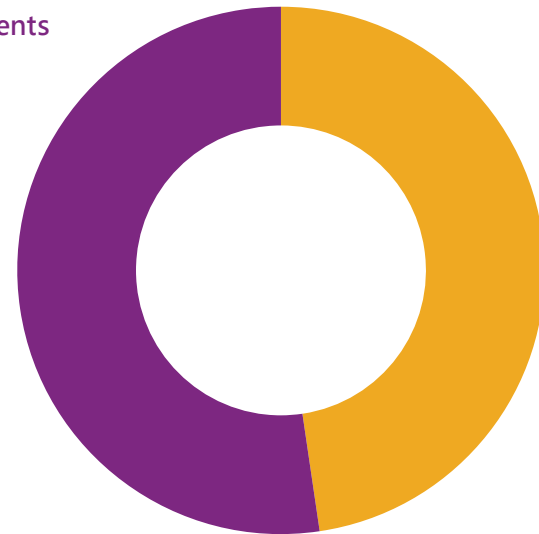


Distribution of Origin

Our postgraduate students come from over 50 different countries/ regions from all over the world including:

- Australia
- Bangladesh
- Belgium
- Brazil
- Canada
- China
- Denmark
- Ecuador
- Ethiopia
- France
- Germany
- India
- Indonesia
- Iran
- Italy
- Japan
- Malaysia
- Nepal
- New Zealand
- Nigeria
- Pakistan
- Philippines
- Russia
- Singapore
- South Korea
- Taiwan
- Thailand
- United Kingdom
- United States
- Vietnam

Local Students
52.4%

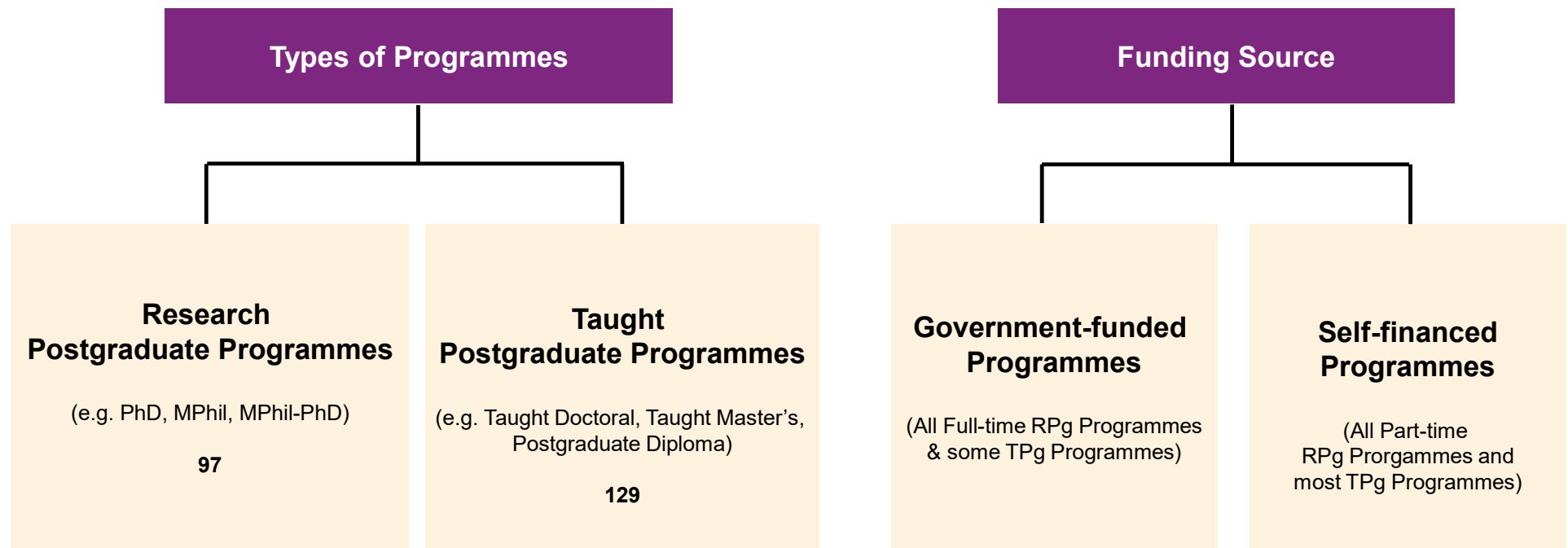


Non-local Students
47.6%

** Figures as of 31 March 2023*



Postgraduate Programmes at CUHK



* Figures as of 2023-24 academic year

Duration of Studies

Full-time Postgraduate Programmes	Normative Period	Maximum Period
Research Doctoral Programmes	36 or 48 months	72 or 84 months
Research Master's Programmes	12 or 24 months	36 or 48 months
Taught Postgraduate Programmes	12 - 48 months	24 - 84 months

Tuition Fees

Full-time Postgraduate Programmes	Tuition fees [#] <i>as of the 2023-24 academic year</i>
Research Postgraduate Programmes	HK\$42,100 <i>per annum</i>
Taught Postgraduate Programmes	HK\$42,100 to HK\$863,450 <i>for the whole programme</i>

[#] Please refer to the tuition fees listed on individual programme websites.

Postgraduate Studentship (PGS)

- Available to **full-time Research Master's (MPhil)** and **Research Doctoral (PhD) students** within their normative study period.
- Subject to revision by the University from time to time.
- For the academic year 2023-24, the monthly PGS is
 - MPhil/PhD (Pre-candidacy): HK\$18,360 (~US\$2,354)
 - PhD (Post-candidacy): HK\$18,870 (~US\$2,419)
- PGS holders are required to assist the respective Graduate Divisions on certain duties relating to research or teaching.



Hong Kong PhD Fellowship Scheme

Established by the Research Grants Council (RGC) in 2009, the **Hong Kong PhD Fellowship Scheme (HKPFS)** aims at attracting the best and brightest students in the world to pursue their PhD programmes in Hong Kong's universities.

Website

www.gs.cuhk.edu.hk/hkpfs

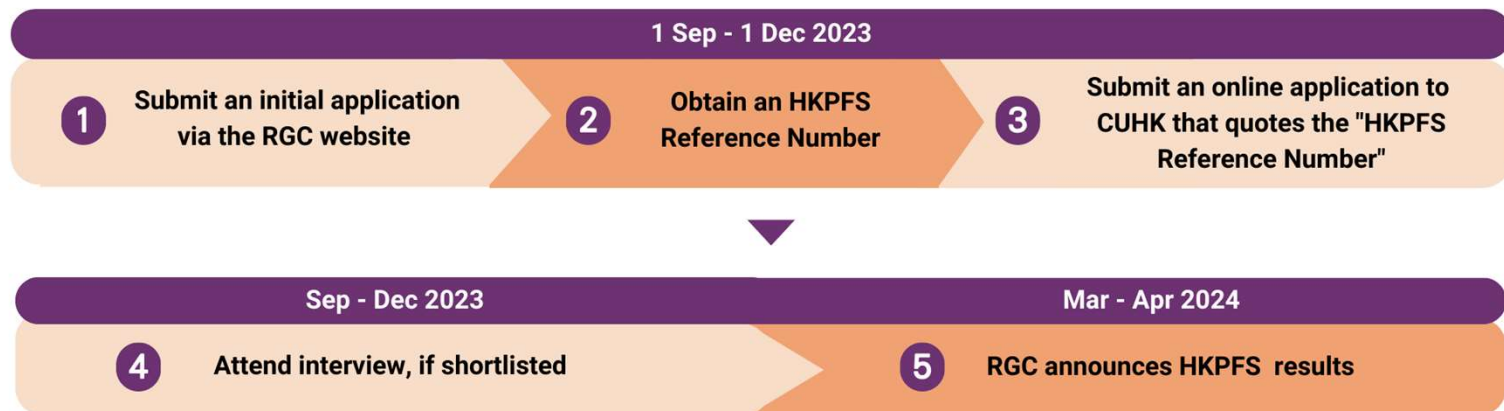


Hong Kong PhD Fellowship Scheme

Eligibility

Candidates who are seeking admission as new full-time PhD students in Hong Kong universities funded by the University Grants Committee (UGC), irrespective of their country of origin, prior work experience and ethnic background, are eligible to apply.

Timeline



Hong Kong PhD Fellowship Scheme

Selection

The HKPFS Selection Panels will select awardees based on the following factors with candidates' academic excellence being most important:



Academic
excellence



Research ability
and/or potential



Communication and
interpersonal skills



Leadership
abilities



香港中文大學
CUHK

研究院
Graduate
School

Hong Kong PhD Fellowship Scheme

The awardees will receive the following award during the normative study period (for a maximum of 4 years):

Stipend	HK\$27,600 (~US\$3,538) per month
Conference Travel Allowance	HK\$13,800 (~US\$1,769) per year during the normative study period (for a maximum of 4 years)

CUHK Vice-Chancellor's HKPFS Scholarship

Tuition Fee Waiver
for the whole normative study period

Stipend
Up to HK\$1.32 Million*
(~US\$169,846)

Lodging Award
Up to HK\$100,000**
(US\$12,800)

**Conference and Research-
related Travel Allowance**
Up to HK\$85,200*
(~US\$10,923)

1st Year Hostel Fee Waiver
and Guaranteed On-campus
Accommodation*^

Totalling

up to HK\$ 1.72 Million (~US\$221,000)
financial assistance during the normative study period

* During the student's normative study period.

^ HKPFS awardees who submit hall applications and complete registration procedures in a timely manner.

An award of HK\$40,000 for lodging in the first year of study and HK\$20,000 in subsequent years during the normative study period.



Targeted TPg Programmes Fellowships Scheme

- Established by the University Grants Committee (UGC) in 2019, the Targeted Taught Postgraduate Fellowships Scheme provides subsidies for **local students** pursuing designated TPg programmes.



Targeted TPg Programmes Fellowships Scheme

Eligibility

- Local students¹, both full-time and part-time, admitted² to the designated TPg programmes of the University for the 2024/25 Intake are eligible to apply for the Scheme.

Duration and Amount of the Fellowship

- The awardees pay a minimum tuition fee of HK\$42,100 for the programme.
- The difference between this minimum and the programme fees is paid by the Scheme, with a cap of HK\$120,000 per student, for the entire programme.

Notes:

- Students are considered as local students except for students holding (i) student visa/entry permit; (ii) visa/entry permit under the Immigration Arrangements for non-local graduates; or (iii) dependant visa/entry permit who were 18 years old or above when they were issued with such visa/entry permit by the Director of Immigration.
- Only applicants who have got an admission offer, accepted the offer and settled the admission deposit will be considered for the Scheme.



Targeted TPg Programmes Fellowships Scheme

Selection Criteria

- The fellowships will be awarded to students on a merit basis; assessment criteria include but not limited to the following:



Academic
achievements



Professional
qualifications



Student's personal
statement



Relevant working
experience



Achievements
in other areas

More information & list of eligible TPg programmes:

www.gs.cuhk.edu.hk/tpgfs



香港中文大學
CUHK

研究院
Graduate
School

Other Scholarships & Funding Support

- More scholarships and funding schemes are available for postgraduate students, including:
 - *CUHK Research Postgraduate Student Grant for Overseas Academic Activities (for all RPs)*
 - *Belt and Road Scholarship*
 - *CUHK Convocation Postgraduate Admission Scholarships*
 - *PhD International Mobility for Partnerships and Collaborations Award*
 - *The Reaching Out Award*
 - *Young Scholars Thesis Award*
 - *Ernst Mach Grant for PhD Students and Post-Docs*
- Some self-financed taught postgraduate programmes also offer scholarships to eligible students.
- For more information, please visit the information at the [Graduate School](#) and [Office of Admissions and Financial Aid](#) website.



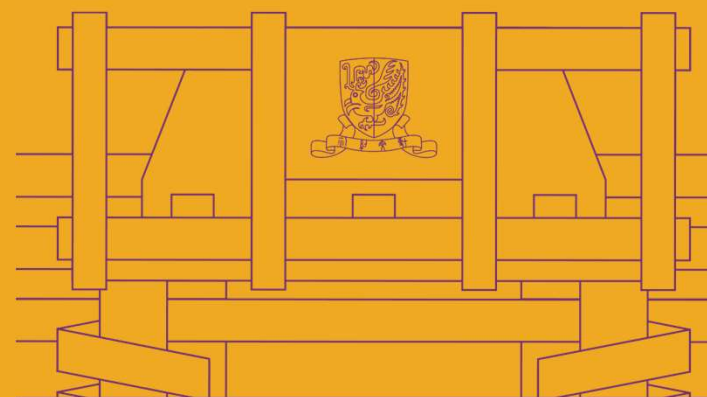
Overseas Internship Opportunities

- Overseas internship opportunities at renowned companies or organizations to enrich the students' international exposure and equip them for dynamic and global careers. Examples of participating organizations include:
 - *Baxter Healthcare Limited*
 - *Hong Kong Tourism Board (Overseas)*
 - *KPMG*
 - *Academia Sinica, Taiwan*
 - *NIH Graduate Partnerships program jointly organized by CUHK and the National Institutes of Health (NIH)*
 - *Microsoft Research Asia Fellowship Program*





General Admission Requirements



General Admission Requirements

Taught Doctoral and PhD programmes

- A master's degree from a recognised university

Master's and MPhil-PhD articulated programmes

- A bachelor's degree from a recognised university, normally with honours not lower than second class; or
- A bachelor's degree from an honours programme of a recognised university, normally with an average grade of not lower than 'B'

Postgraduate diploma programmes

- A bachelor's degree from a recognised university



English Language Requirements for Admission

- A degree from a university in Hong Kong¹ or a degree of which the medium of instruction was English; or
- Achieved scores in any of the following English Language tests² as indicated:

TOEFL	550 (paper-based)/ 79 (internet-based)
IELTS (Academic)	6.5
GMAT	Band 21 (Verbal)

Notes:

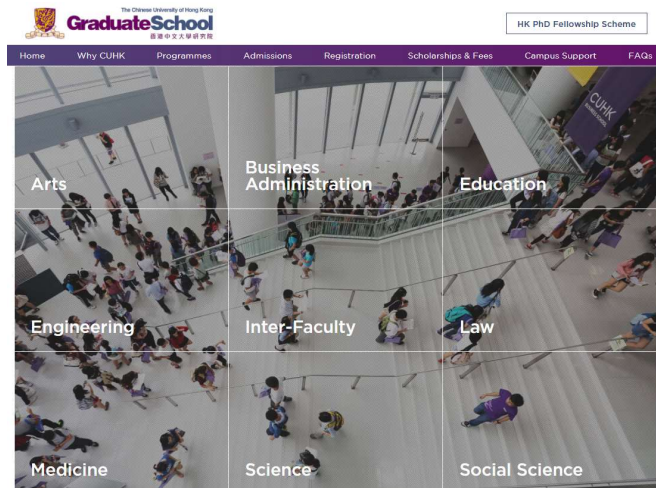
1. This is based on the understanding that English is the medium of instruction of degree programmes offered by universities in Hong Kong.
2. TOEFL and IELTS scores are considered valid for two years from the test date. GMAT score is considered valid for five years from the test date.



Application Timeline and Procedures

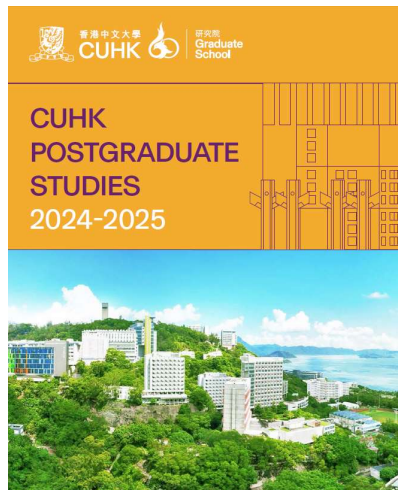
Please refer to the Graduate School admissions website for more information on individual programmes and application procedures.

<http://cuhk.gs/cugs>

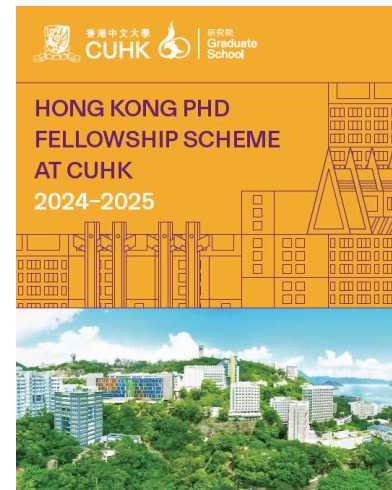


PG Prospectus & HKPFS Leaflet

For more information, please refer to the following PG Prospectus and HKPFS leaflet.



***PG Prospectus
for 2024-25 Intake***
[\[Download Link\]](#)



***HKPFS Leaflet
for 2024-25 Intake***
[\[Download Link\]](#)



See you in CUHK

Email enquiry: pgadmit@cuhk.edu.hk

